

STEREO MICROSCOPE



TP-B6/B6T

Specification

Zoom Range of Zoom Body: 0.7X-4.5X

Zoom Ratio: 1: 6.5

Max. Optic Magnification: 2.1X-270X

Field of View: 1mm-95.2mm

Working Distance: 30mm-165mm

Working Distance with Built-in 1X Lens: 100mm

Interpupillary Adjustment: 54mm-75mm

Optional

Eyepieces: 10X, 15X, 20X, 25X and 30X

Auxiliary Lenses: 0.3X, 0.5X, 0.75X, 1.5X and 2X

Video Couplers: 0.3X and 0.5X (For Trinocular Body)



TP-6745/6745T

Specification

Zoom Range of Zoom Body: 0.67X-4.5X

Zoom Ratio: 1: 6.7

Magnification: 2X-270X

Field of View: 1mm-109.5mm

Working Distance: 26mm-287mm

Interpupillary Adjustment: 52mm-75mm

Eyeteube Inclination: 45° and 60° rotatable microscope head

Working Distance of Built-in Objective Lens: 100mm

Optional

Eyepieces: 10X, 15X, 20X, 25X and 30X

Auxiliary Lenses: 0.3X, 0.5X, 0.75X, 1.5X and 2.0X

Video Couplers: 0.5X and 1X (For Trinocular Body)

METALLURGICAL MICROSCOPE



TP-CX40M

Specification

Viewing Head: 30°inclined gemel binocular/Trinocular head
Interpupillary distance: 54mm~75mm, diopter ± 5 adjustable
Eyepiece: High eyepoint 10x/22mm with optional reticule
Objectives: 5x/10x/20x/50x/100x
Focus: Coaxial focus adjust,
Coarse range: 28mm, fine precision: 0.002mm
Stage: Double layer mechanical stage with X/Y coaxial adjust;
Stage size: 175x145mm, moving range: 76x42mm



TP-MX4R

Specification

- 30°inclined gemel binocular observation tube
- Trinocular port for camera
- High eyepoint 10x/22mm eyepiece
- Inward facing nosepiece
- Bright field, Oblique Illumination
- DIC, Polarization inspection techniques
- High power 5W white LED reflected light

Objectives: 5x/10x/20x/50x/100x
Focus: Coaxial focus adjust
Coarse range: 33mm, fine precision: 0.001mm
XY travel: 105x105mm



TP-6800

Specification

- High eyepoint 10x/22mm eyepiece
- Bright Field, Dark Field, DIC, Polarization
- Infinity long working distance bright & dark field

Objectives: 5x/10x/20x/50x/100x
- Quintuple Nosepiece
- 6 inch stage
Travel range: 158x158mm, with fast clutch lever

VIDEO MICROSCOPE



TP-2000N

Specification

Magnification: 12x-78x ZOOM

Built in 0.35x Video Coupler; 1x Objective Lens

FOV: 23mm- 3mm; Working Distance: 100mm

Base Size: 260(x)*320(y)mm

Height: 480mm; Weight: 5.5kg

2.0M HDMI; Max Resolution: 1920*1080

Sensor: 1/2.86 inch Sony Sensor

Pixel Size: 2.75*2.75 μ m Frame Rate: 60fps@1920*1080

- 12 inch HD LCD Display, 1080P wide screen
- Wireless mouse control, image capture, U disk storage
- User friendly software for measurement

Specification

Zoom Len: 0.4x-8.0x

Working Distance: 86mm-174mm

Resolution: 27.5 μ m-2.3 μ m

FOV: 1.6mm-63.9mm

Optional Objective: 0.5x/0.75x

Dimensions: 213mmx52mm

- HDMI 1.4, 60fps@1080p
- 2M(1920*1080) JPEG in SD card



TP-0480H

DIGITAL CAMERA



TP-309M

Specification

- Sony imx335 Sensor, sensor size 1/2.8"
- 1080p 1920*1080@60fps, HDMI
- 5MP, pixel size 2.0μm×2.0μm
- USB Drive Storage or external SD card
- Size: 50*50*58mm, weight: 0.3kg



TP-4KAF

Specification

- 3840*2160@60fps, HDMI
- 8MP, pixel size 2.0μm×2.0μm
- USB 3.0 + HDMI + UVC (to PC)
- **AUTO FOCUS** features
- Size: 70mm*70mm*80mm
- Storage to USD Drive/PC



VIDEO MEASURING SYSTEM



VME Economy
Video Measuring Machine

Specification

- Travel: 200×200×200mm (S)
- Dimension: 740×1040×1762mm
- Stage loading: MAX 25kg
- Optics: Auto zoom lens, 6.5:1 continuous zooming
- Magnification: 25-160×
- Speed: XY 500mm/s, Z 100mm/s
- Scale: 0.5 μ m
- Software: Vispec
 - 3-axis CNC servo control system



VMC Classic
Video Measuring Machine

Specification

- Travel: 200×200×200mm (S)
- Dimension: 740×1040×1762mm
- Stage loading: MAX 25kg
- Optics: Auto zoom lens, 8.3:1 continuous zooming Lens
- Magnification: 25-209×
- Speed: XY 500mm/s, Z 100mm/s
- Scale: 0.5 μ m
- Software: Vispec
 - 4-axis CNC servo control system

VIDEO MEASURING SYSTEM



VMU Ultra

Video Measuring Machine

Specification

Travel: 200×200×200mm (S)

Dimension: 740×1040×1762mm

Stage loading: MAX 25kg

Optics: Auto zoom lens, 13.3:1 continuous zooming Lens

Magnification: 25-338×

Speed: XY 500mm/s, Z 100mm/s

Scale: 0.5 μ m

Software: Vispec

- 4-axis CNC servo control system



VMQ Quick

Video Measuring Machine

- High precision and high efficiency with one-button quick measuring
- Wide field of view, large depth of view and high resolution
- Accurate and quick measuring, capable of identifying multiple work pieces in one FOV, batch measuring
- Automatically load program without the need of manual search
- Automatic image registration, quick positioning of work pieces without assistance of fixture

ACCESSORIES (RING LIGHT)



TP-85-4P



TP-92-4P



TP-LED48

ACCESSORIES (STAND)



BBS-4011



BPS-10101



BTS-10101



BTS-20101

METALLOGRAHY EQUIPMENT

DESKTOP METALLOGRAPHIC PRECISION CUTTING MACHINE



TP-D150A

Cutting Speed: 0~3000RPM (50/60Hz)
Power: 100W (60/50Hz)
Cutting Disc: Diamond cutting disc,
Outer Ø150mm, Inner Ø31.75(*Ø25.4)mm
Electricity: AC 220V/380V 50Hz/60Hz 3P
Weight: 21kg



TP-B255FS

Cutting Speed: 3240RPM (60Hz)
Power: 3HP (60/50Hz)/2.2kW/ACP3
Cutting Disc: Outer Ø230mm/Ø255mm,
Inner Ø31.75mm
Electricity: AC 220V~240V 50Hz 2300W
Weight: 120kg

METALLOGRAHY EQUIPMENT

AUTOMATIC METALLOGRAPHIC CUTTING MACHINE(S)



TP-200AS

Cutting Motor: 1HP (60/50Hz)

Cutting Speed: 2990(60Hz), 2960(50Hz)RPM

Cutting Disc: Outer \varnothing 200mm, Inner \varnothing 31.75mm

Cutting Height: 62mm

Electricity: AC 220V/380V 50Hz/60Hz 3P

Power: 1000W

Size: D900*W800*H1300mm

Weight: 257kg (220V)



Automatic Function



User-Friendly Operating Space



Reinforced Safety Glass



Consumable Compatibility

METALLOGRAHY EQUIPMENT

AUTOMATIC METALLOGRAPHIC CUTTING MACHINE (L)



Cutting Motor: 3HP (60/50Hz)

Cutting Speed: 2670(60Hz), 2640(50Hz) RPM

Cutting Disc: Outer $\varnothing 255\text{mm}$, Inner $\varnothing 31.75\text{mm}$

Cutting Height: 500mm

Electricity: AC 220V/380V 50Hz/60Hz 3P

Power: 2500W

Size: D980*W900*H1500mm

Weight: 439.5kg (220V)

TP-255ASL



MIT Taiwanese System



Maintenance convenience



Laser Tool Setting (Optional)



Slide-up protection hood

METALLOGRAHY EQUIPMENT

MANUAL METALLOGRAPHIC POLISHING & GRINDING MACHINE



TP-1020FRX/1025FRX



TP-2020FRX/2025FRX

No. of Grindng Disc: 1/2

Grinding Disc Size: 200mm/250mm

Grinding Speed: MAX 800RPM 60Hz/50Hz

Motor Spec: AC 220V 400W brushless motor

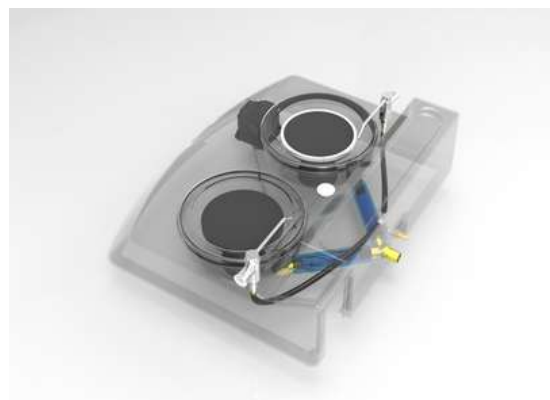
Power Supply: AC 220V 1Phase

Size: W556*D652*H303mm/W796*D726*H303mm

Weight: 36kg/57kg



Durable Structure - Aluminium Base



Anti Clogging Design



Cooling System

METALLOGRAHY EQUIPMENT

AUTO METALLOGRAPHIC POLISHING & GRINDING MACHINE



TP-1020FRX-A3/1025FRX-A3



TP-2020FRX-A3/2025FRX-A3

No. of Grindng Disc: 1/2

Grinding Disc Size: 200mm/250mm

Grinding Speed: MAX 800RPM 60Hz/50Hz (Direction adjustable)

Grinding Method: Auto/Manual

No. of Grinding Sample Piece: 3/5

Specimen Size: Ø32mm (25, 30, 40mm can be selected)

Motor Spec: AC 220V 400W brushless motor

Auto Head Motor: DC 24V 80W, MAX 150RPM

Power Supply: AC 220V 1Phase

Size: W556*D652*H568mm/W796*D727*H568mm

Weight: 52kg/73kg



METALLOGRAHY EQUIPMENT

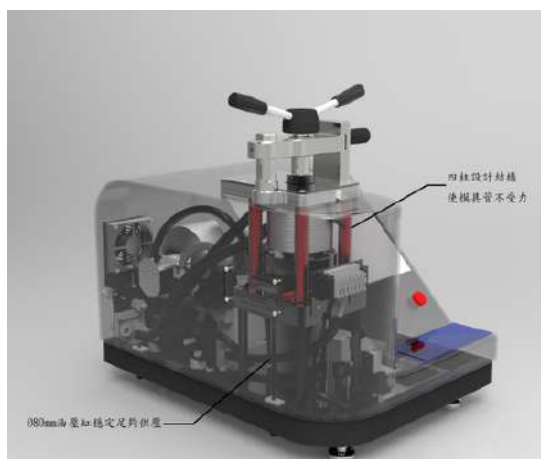
AUTO METALLOGRAPHIC MOUNTING PRESS MACHINE



TP-32AX/40AX

Sample Size: $\varnothing 32\text{mm}/\varnothing 40\text{mm}$
Pressure: Max. 4000PSI/3200PSI
Quantity: 1-2
Temperature: 110-200°C adjustable
Power Supply: 220V 60/50Hz Single Phase
Heating Power: 1800W
Machine Power: 2400W
Size: W450*D695.5*H569mm
Weight: 82kg

One Touch Auto Preparation



Programmable module



METALLOGRAHY EQUIPMENT

AUTO METALLOGRAPHIC MOUNTING PRESS MACHINE



TP-AX6

Sample Size: Ø32mm
Pressure: 1625PSI(114kgf/cm²)
Quantity: 1-6 MAX Height 30mm
Temperature: 110-200°C adjustable
Power Supply: 415V 60/50Hz Three Phase
Heating Power: 3000W
Machine Power: 3500W
Size: W540*D552*H1300mm
Weight: 120kg



Efficiency Preparation
6 samples produced within 15 minutes



CONSUMABLES

Cold Mounting Acrylic Resin Series



Standard Kit

- a) Acrylic Powder: 1lb (0.45kg)
- b) Liquid Hardener: 12 oz (0.36L)

Large Kit

- a) Acrylic Powder: 5lb (2.3kg)
- b) Liquid Hardener: 64 oz (1.9L)



Cold Mounting Mould (32/25mm)



Hot Mounting Series

- a) Mounting Compound
- b) Release Agent



8" Silicon Carbide Abrasive Paper (Plain, W/PSA)

#180	#1000
#240	#1200
#320	#1500
#400	#2000
#600	#2500
#800	#4000



Polishing Powder & Cloth

0.05 micron, 0.3 micron, 1 micron

PEAK OPTICS



1961-10x



1962-15x



1964-22x



2032-10x



1983-10x



2016-15x



2037-30x

PUSH PULL GAUGE



Force Gauge



Test Stand



MEASURING INSTRUMENTS



Caliper



Dial Indicator



Micrometer

MISCELLANEOUS



Sigma II
Thermohygrograph



Chart Paper
(7days/32days)



Cartridge Pen
(Violet/Red)



Datalogger



Digital/Infrared Thermometer

CLEANROOM/SAFETY PRODUCT



ESD Shoe



Shoe Cover



Glove



Finger Cot



Face Mask



ESD Smock

TOPPER



合興儀器有限公司

HUR SHENG

INSTRUMENTS (M) SDN. BHD.

CONTACT US



www.hursheng.com.my



IPOH HEAD OFFICE 012-5062736
KL SALES OFFICE 018-5775593



sales@hursheng.com.my
cychin@hursheng.com.my



19, LENGKOK RISHAH 2, PUSAT PERNIAGAAN RISHAH, 30100 IPOH, PERAK